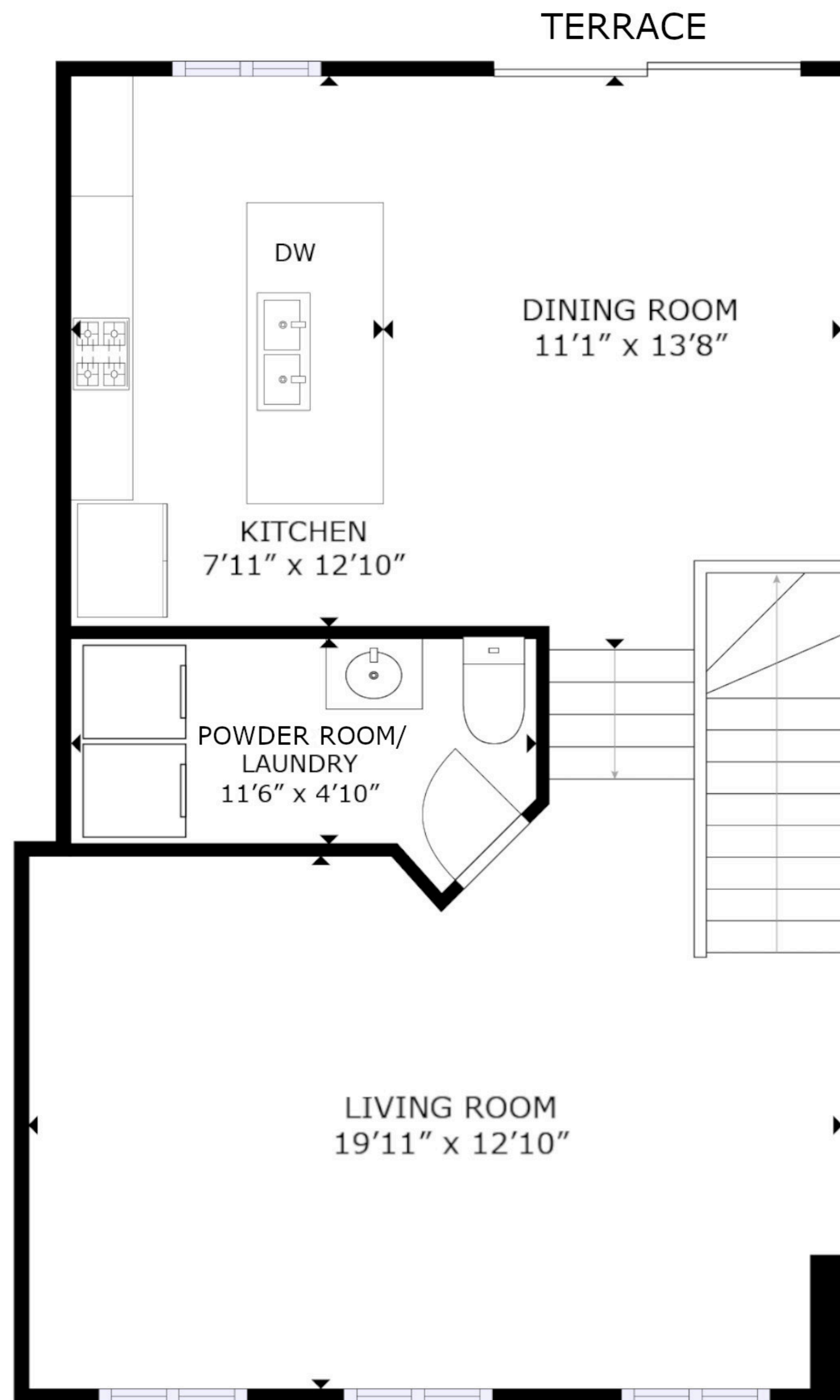


7945 NADEAU, #19, BASEMENT

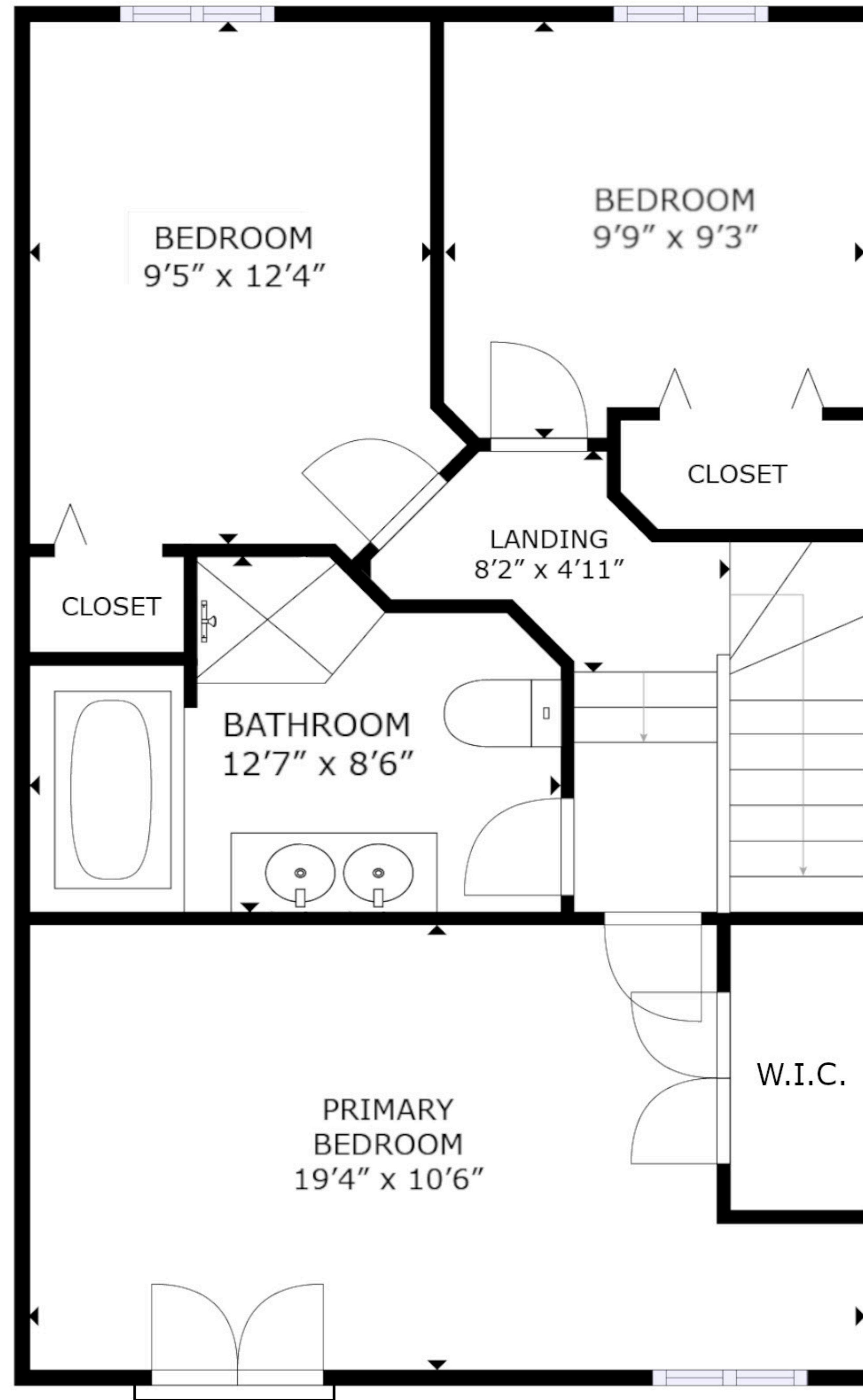
FLOOR 1

GROSS INTERNAL AREA
FLOOR 1: 371 sq. ft, FLOOR 2: 638 sq. ft
FLOOR 3: 641 sq. ft, TOTAL: 1,650 sq. ft
EXCLUDED AREA: GARAGE: 195 sq. ft
SIZES AND DIMENSIONS ARE APPROXIMATE, ACTUAL MAY VARY.



7945 NADEAU, #19, FLOOR 2

GROSS INTERNAL AREA
 FLOOR 1: 371 sq. ft, FLOOR 2: 638 sq. ft
 FLOOR 3: 641 sq. ft, TOTAL: 1,650 sq. ft
 EXCLUDED AREA: GARAGE: 195 sq. ft
 SIZES AND DIMENSIONS ARE APPROXIMATE, ACTUAL MAY VARY.



7945 NADEAU, #19, FLOOR 3

GROSS INTERNAL AREA
 FLOOR 1: 371 sq. ft, FLOOR 2: 638 sq. ft
 FLOOR 3: 641 sq. ft, TOTAL: 1,650 sq. ft
 EXCLUDED AREA: GARAGE: 195 sq. ft
 SIZES AND DIMENSIONS ARE APPROXIMATE, ACTUAL MAY VARY.